



Adobe® Workflow Server

Connect people, processes, and applications

Business processes are the building blocks of every organization. The more efficient the process, the stronger the competitive advantage. To automate business, organizations must create and capture the right information, define business rules and role-based routing, and implement process control. By managing the flow of work and information among employees, customers, and partners, companies extend the value of their core business systems and the data they contain.

Design, Deploy, and Manage

Adobe Workflow Server is a workflow application that allows you to design, deploy, and manage form-based business processes. Using Adobe Workflow Server along with the Adobe Workflow Designer, you can design and deploy processes that meet your unique business requirements. You'll be able to support your business as it is today by controlling the steps in each process. You specify not only the business rules the workflow must follow but also the role of each person involved in the process.

Improve Business Agility

The efficiency of your business processes will determine your ability to operate and compete in your marketplace. Adobe Workflow Server is an effective solution for organizations that need to improve how they manage their business processes in order to increase operational efficiencies and grow revenue.

Adobe Workflow Server also allows you to:

- Eliminate process bottlenecks
- Increase process control, accountability, and flexibility
- Respond to shifting business conditions without changing core systems
- Leverage and extend existing back-office systems

Adobe Network Publishing Solutions

Adobe Workflow Server is an integral component of Adobe Network Publishing Solutions, helping businesses and people work together more productively and effectively.



Key Features

Scalability and performance

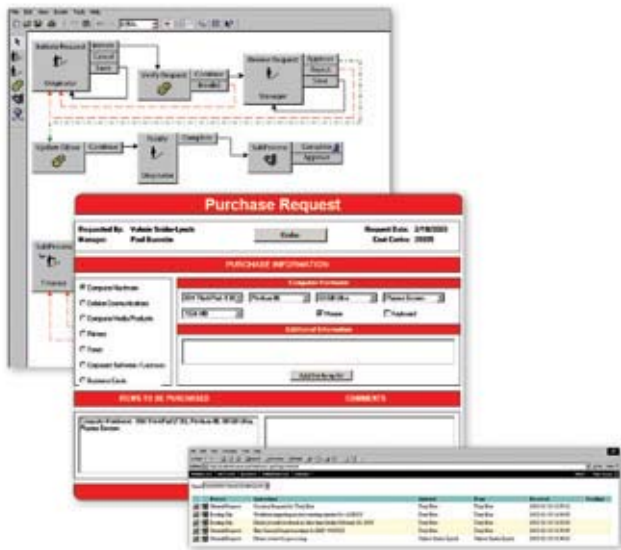
The flexible architecture scales both horizontally and vertically to suit the performance and around-the-clock availability needs of your business.

Interoperability

This complete, Web-enabled business process automation solution works seamlessly with other Adobe process management solutions.

Web-based user interface

A customizable central location enables end users to retrieve daily work items from a shared or individual work list. This user interface provides work lists and initiates a process when the forms that start the process are selected.



Output Solutions, Inc. □
Somerset, New Jersey 08873 □
Phone: (800) 246-1336 □
In NJ, call (732) 422-8250 □
Fax: (732) 422-1311 □
www.outputsolutions.com □
Email: Sales@outputsolutions.com

Directory integration

A unified view of the internal directory makes it easy to maintain a list of users and create a single set of credentials per user, meaning less administrative overhead.

Simplified business integration

Customers, partners, and employees can access critical business data stored in your back office by using intuitive, Web-based forms and integration tools.

Form and data independence

Separate the form from the data and accelerate process efficiencies, reduce network traffic, and render appropriately to the end user's requirements.

SIMPLIFY PROCESS DESIGN

- Create dynamic forms
- Route XML data
- Enable multiple views, using the same data
- Ensure timely processing with deadlines and reminders
- Add attachments to documents using a document envelope
- Use flexible e-mail and Web-based routing

Design:

Create a process with rules and roles to meet business needs.

Deploy:

Set the process into motion according to the business rules and roles designed in the process map that render appropriately to the end-user's requirements.

Manage:

- View work items that appear in a shared or individual work list window.
- Track work items in progress.
- Participate in a process offline and submit when back online.

System Requirements

Adobe Workflow Server supports
Microsoft® Windows® 2000.

FOR MORE INFORMATION
To learn more about Adobe Workflow Server and the complete line of Adobe server products, please visit www.adobe.com/server.

Adobe Systems Incorporated • 345 Park Avenue, San Jose, CA USA 95110-2704 USA • www.adobe.com

Adobe, the Adobe logo, and "Tools for the New Work" are either registered trademarks or trademarks of Adobe Systems Incorporated in the United States and/or other countries. Microsoft and Windows are either registered trademarks or trademarks of Microsoft Corporation in the United States and/or other countries. All other trademarks are the property of their respective owners. © 2002 Adobe Systems Incorporated. All rights reserved. Printed in the USA.

95000990 10/02



Tools for the New Work™